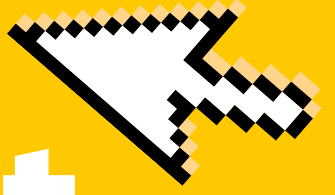


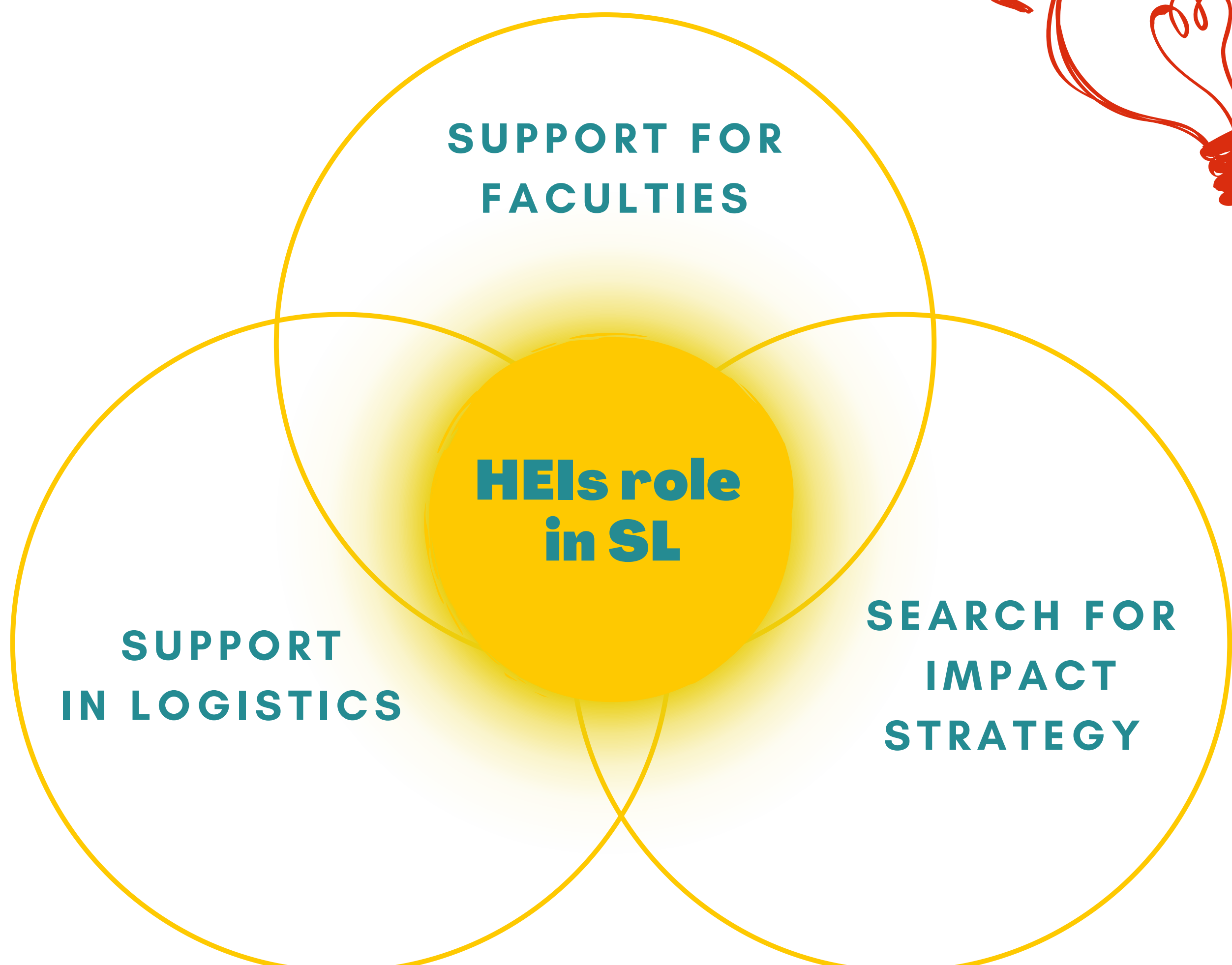
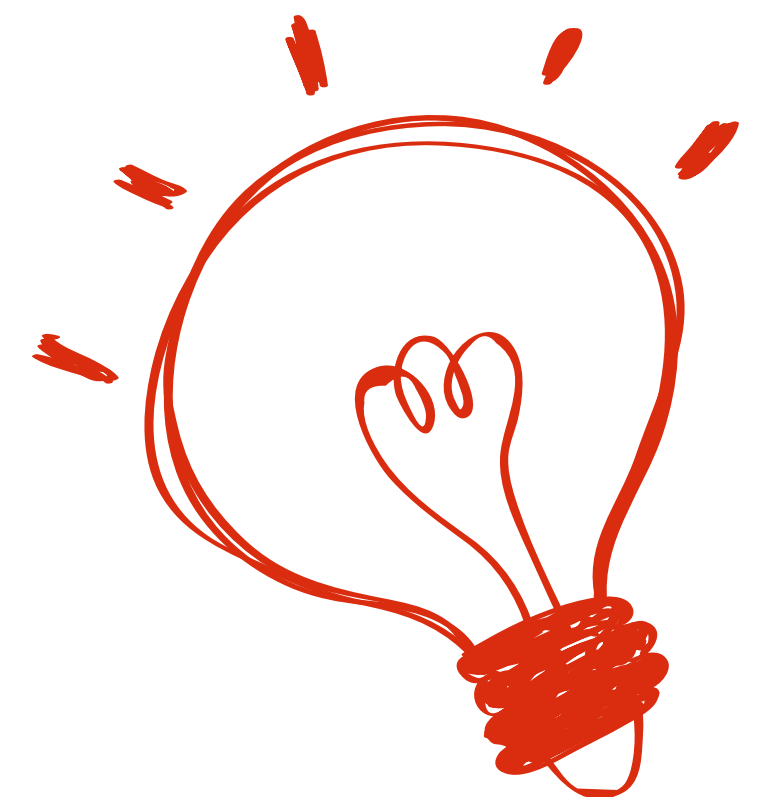
Service-Learning, Inclusion, Diversity & Digital Empowerment



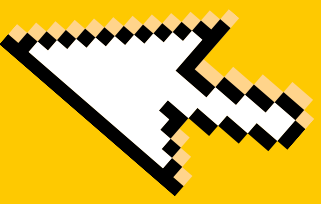
HIGHER EDUCATION INSTITUTIONS

The main duty of HEIs is to support faculties in their implementation and development of SL experiences.

The role of HEIs is to strategize how SL can be improved, expanded and utilized to its full potential for societal gains.



Service-Learning, Inclusion, Diversity & Digital Empowerment



HEIs NEEDS for developing future education:

1

CONTRIBUTION TO SOCIETY:

- BEING AWARE OF THE ISSUES AT PLAY IN SOCIETY
- ACTIVELY MAKING IMPACT WITHIN COMMUNITIES
- RESEARCH ORIENTED AT UNDERSTANDING & RESOLVING SOCIETAL ISSUES



2

RELEVANT PROGRAMS:

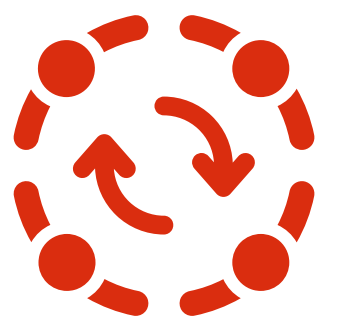
- HAVE AN UPDATED AND FUTURE PROOF CURRICULUM
- CONNECT TECHNOLOGY TO RELEVANT ISSUES IN SOCIETY



3

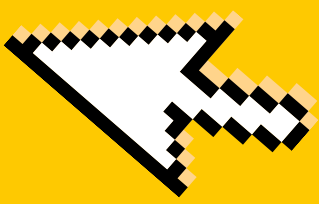
INNOVATIVE TEACHING METHODS

INTEGRATE TECHNOLOGY WITH FORMATIVE, FLEXIBLE, HYBRID & SYNCHRONOUS TEACHING METHODS

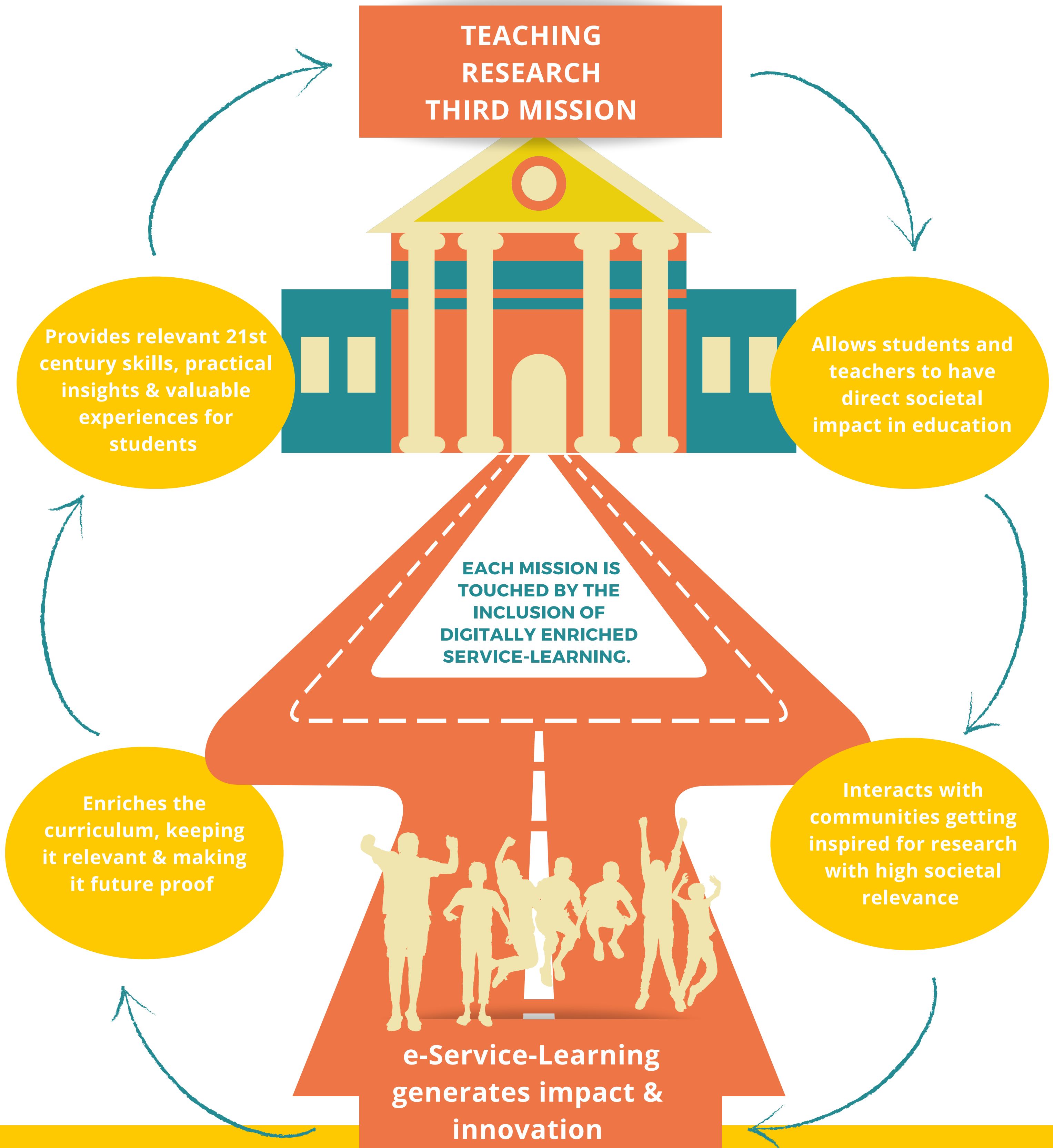


To have this conversation, HEIs need to be equipped with these ingredients: skills, resources, and knowledge

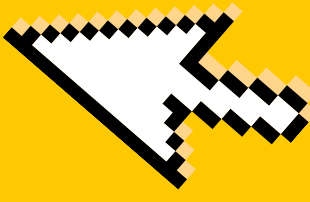
Service-Learning, Inclusion, Diversity & Digital Empowerment



IMPACT & INNOVATION for HEIs



Service-Learning, Inclusion, Diversity & Digital Empowerment



HEIs: CONDITIONS for successful SL&DE

CREATE REWARDS
FOR SL

FOSTER
INNOVATIVE
TEACHING
METHODS

INVEST IN
TECHNOLOGY

CREATE
INDEPENDENT
INFRASTRUCTURE
FOR SL

PROVIDE
SUPPORT FOR
FACULTIES AND
STAFF

PROVIDE
LITERATURE
ON SL&DE

DEVELOP
METHODS AND
TOOLS FOR SL
EVALUATION

SUPPORT
NETWORKING
WITH
COMMUNITY
MEMBERS

DISSEMINATE
PROJECT
RESULTS

PROVIDE
TRAINING ON
DIGITAL TOOLS
AND
PLATFORMS